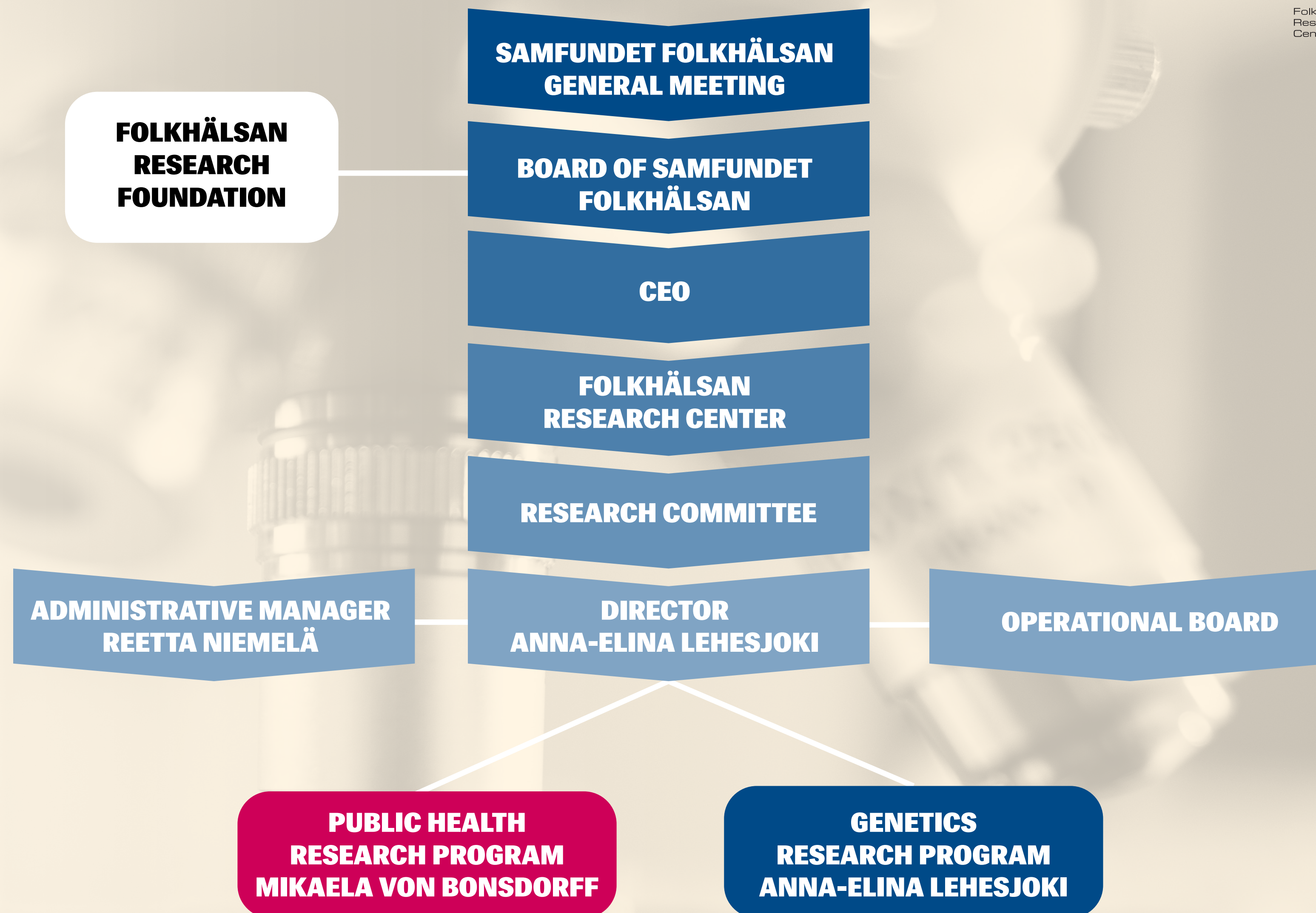




Folkhälsan Research Center 2025

One of the main fields of focus at Folkhälsan is scientific research.

The Folkhälsan Research Center is an internationally renowned unit with focus on genetics and public health research within two programs.



Research

Genetics Research

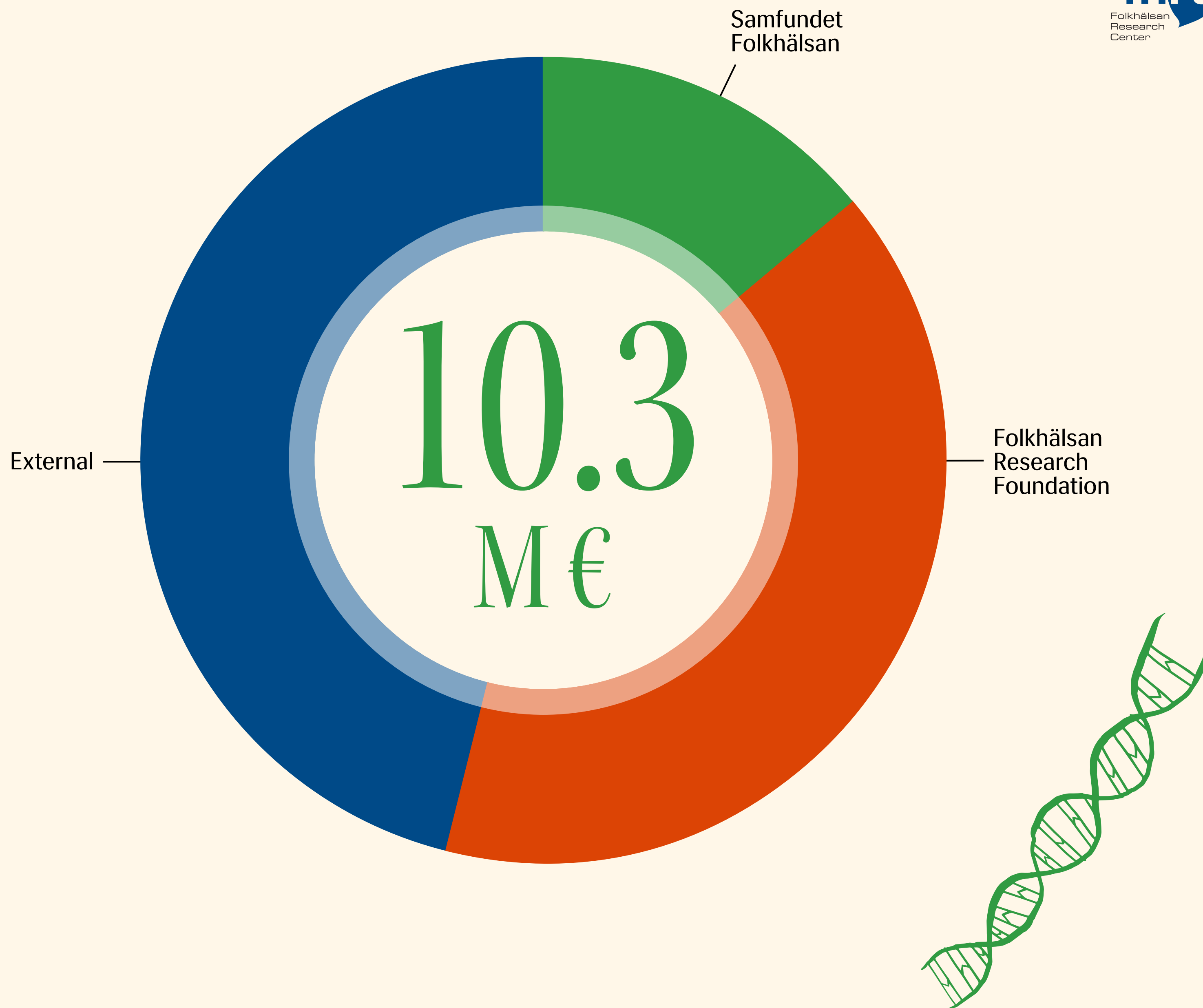
- Genetic causes and mechanisms of rare genetic diseases
- Genetic and lifestyle risk factors in diabetes and diabetic complications

Public Health Research

- Health promotion throughout the life course
- Health and disease from a life course perspective
- Active and healthy aging

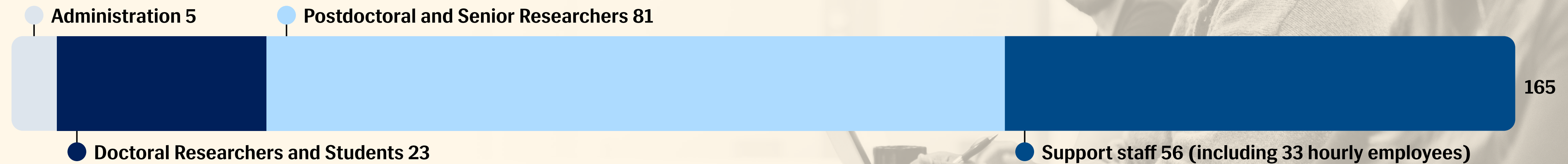
Funding

The total funding for 2025 was EUR 10.3 M.
External funding accounted for 46%. 40% was
funded by the Folkhälsan Research Foundation
and 14% by the Samfundet Folkhälsan's
foundations.



Personnel

The research center employed 165 persons in 2025 (including 33 hourly employees as support staff), with a total of around 139 FTEs (Full-Time Equivalent). In addition, several doctoral students and other researchers were entirely externally funded, e.g. by the University of Helsinki or private foundations.

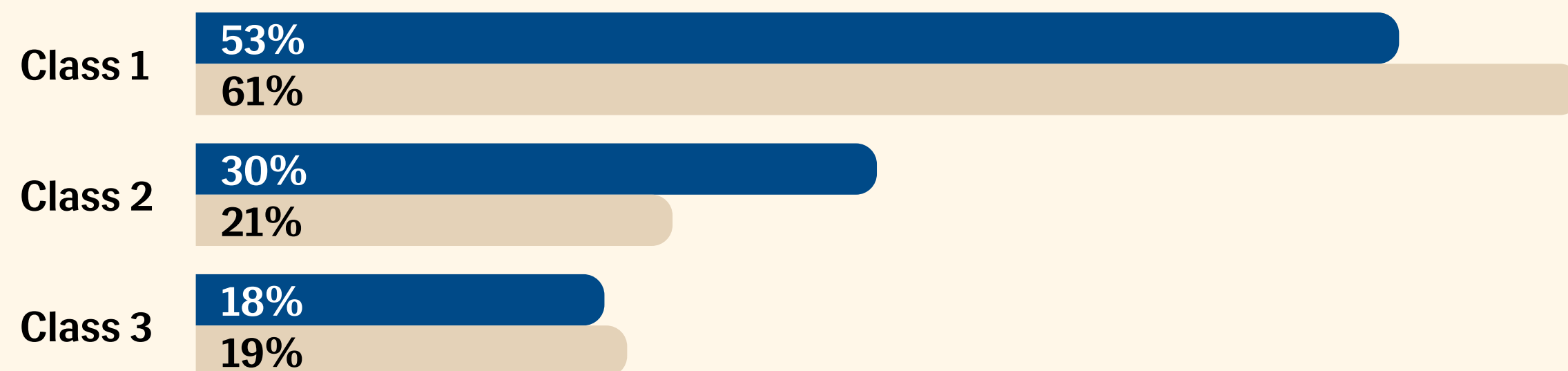


Publications

During the year, the research groups published 200 articles. Of these, 118 were peer-reviewed original articles in which Folkhälsan played a central role. The articles were published in journals classified by the Finnish Publication Forum (JuFo).*

48% of Folkhälsan's publications were placed in the highest categories, 2 and 3, while 40% of articles at the national level** were placed in these categories.

Publications per class ■ Folkhälsan 2025 ■ Universities in Finland 2024



* The JuFo Publication Forum (Julkaisufoorumi) is a classification of publication channels created by the Finnish scientific community to support the quality assessment of academic research.

** All peer reviewed scientific articles in medicine and health sciences 2024 in all Finnish universities and universities of applied sciences. (Data for 2025 not yet available.) Source: Vipunen.

View all our publications here:



Doctoral Theses 2025

Anna Abdollahi: Sleep habits of Finnish preschoolers: Associations with diet and weight. Folkhälsan Research Center, University of Helsinki 8.2.2025. Supervisors: Maijaliisa Erkkola, Eva Roos, Ilona Merikanto.

<https://helda.helsinki.fi/items/90592d34-93ed-46db-bbf1-938041469bed>

Anni Antikainen: Genetics and metabolomics of cardiovascular disease in type 1 diabetes. Folkhälsan Research Center, University of Helsinki 30.10.2025. Supervisors: Niina Sandholm, Per-Henrik Groop, Stefan Mutter.

<https://helda.helsinki.fi/items/e7745a4b-03b2-419d-a7c3-34a892a6c8e7>

Rishi Banerjee: Novel disease mechanisms and effects of gene therapy in mouse models of neonatal mitochondrial complex III deficiency. Folkhälsan Research Center, University of Helsinki 16.5.2025. Supervisors: Jukka Kallijärvi, Vineta Fellman.

<https://helda.helsinki.fi/items/1d997df7-2807-48c1-b06d-a1f4261ef9e3>

Marika Eriksson: Cerebral small vessel disease and stroke in type 1 diabetes – the impact of blood pressure, haptoglobin genotype, and diabetic retinopathy. Folkhälsan Research Center, University of Helsinki 4.4.2025.

Supervisors: Lena Thorn, Per-Henrik Groop, Juha Martola.

<https://helda.helsinki.fi/items/63232de4-579a-4a3b-b413-c18e90a8fa2f>

Katarin Gorski: Insights into synaptic physiology from omics analyses in the early disease onset of CSTB-deficient mice modeling EPM1. Folkhälsan Research Center, University of Helsinki 5.12.2025.

Supervisors: Anna-Elina Lehesjoki, Brendan Battersby, Outi Kopra (deceased).

<https://helda.helsinki.fi/items/f65064bb-6214-4fbc-92a7-1dc1f14c61fd>

Jani Haukka: Genetic and metabolomic factors of type 1 diabetes and diabetic kidney disease. Folkhälsan Research Center, University of Helsinki 17.6.2025.

Supervisors: Per-Henrik Groop, Niina Sandholm.

<https://helda.helsinki.fi/items/a6d1b7e9-2e31-4a1b-a807-df5adc6b4e15>

Saila Holopainen: Hypoxemic pulmonary diseases in dogs – Insights into clinical features, diagnostic imaging and genetics. Folkhälsan Research Center, University of Helsinki 3.10.2025. Supervisors: Hannes Lohi, Minna Rajamäki.

<https://helda.helsinki.fi/items/ac6fcd6e-be7c-4f4b-990c-45fcb9521213>

Anna-Maria Lahti: Social circumstances and social environment as determinants of physical and mental functioning in older age. Folkhälsan Research Center, University of Jyväskylä 3.12.2025.

Supervisors: Mikaela von Bonsdorff, Tuija Mikkola.

https://jyx.jyu.fi/jyx/Record/jyx_123456789_106763?lng=fi

Pauliina Repo: Genetic Predisposition to Uveal Melanoma in the Finnish Population. Folkhälsan Research Center, University of Helsinki 23.5.2025.

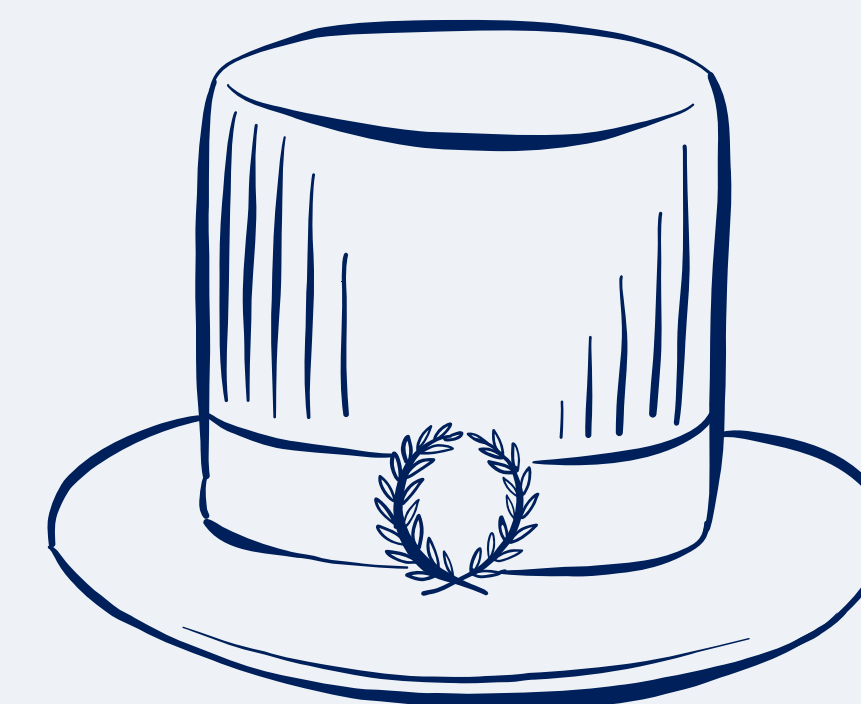
Supervisors: Tero T. Kivelä, Joni Turunen.

<https://helda.helsinki.fi/items/c81631a0-b0d8-48a9-96b4-9adc71c47ddd>

Ann-Louise Sirén: Quality of life in relation to person–environment fit and life course influences – Perspectives of senior housing residents in Finland. Folkhälsan Research Center, University of Helsinki 19.12.2025.

Supervisor: Mikaela von Bonsdorff.

<https://helda.helsinki.fi/items/3043aed0-67dc-42c9-9c4d-4974e5765efc>



Master's Theses 2025

Elias Granath: Miten arvioitu rasvamassa korreloi todelliseen rasvamasaan tyyppin 1 diabetesta sairastavilla henkilöillä? University of Helsinki.

Supervisors: Lena Thorn, Fanny Jansson Sigfrids.

<https://helda.helsinki.fi/items/90f41ed9-b9ee-469d-afb8-902aeac58eec>

— — — — —

Minna Ikonen: Identification of functional enhancer-promoter interactions in the canine brain. Aalto University. Supervisors: Noora Salokorpi, Hannes Lohi.

<https://aaltodoc.aalto.fi/items/e17eb5c8-295e-4eaf-9876-bab397b7ddce>

— — — — —

Senja Iskala: Proteomic predictors of Cardiovascular events in Type 1 Diabetes. University of Helsinki.

Supervisors: Emma Dahlström, Niina Sandholm.

<https://helda.helsinki.fi/items/25b88fd7-08bb-430b-9827-5b8ff124b6a4>

— — — — —

Taru Kettunen: Perinnöllisen sferosytoosin geenitaustan selvittäminen cockerspanielirotaisilla koirilla.

University of Oulu.

Supervisors: Marjo Hytönen, Hannes Lohi, Heikki Helanterä.

<https://oulurepo.oulu.fi/handle/10024/56528>

— — — — —

Anna Kivistö: How are perceived pet support and daily dog-related exercise associated with mental health in Finnish youth? University of Helsinki.

Supervisors: Aada Ståhl, Hannes Lohi, Jari Lahti.

<https://helda.helsinki.fi/items/3d817bfb-1e20-45cb-b165-c7e322949fa4>

Mayke Kramer: Associations between aspects of the home-, school and digital food environment and food consumption in school-aged children. University of Helsinki. Supervisors: Reetta Lehto, Josefine Björkqvist, Henna Vepsäläinen.

<https://helda.helsinki.fi/items/4a3c91fc-40d8-469d-989f-09686b1e3d4f>

— — — — —

Sonja Leivo: Associations Between 10–14-year-old Children's Eating Competence, Dietary Patterns, and Dietary Quality. University of Helsinki.

Supervisors: Reetta Lehto, Jenna Rahkola, Henna Vepsäläinen.

<https://helda.helsinki.fi/items/056533a2-2e12-4db2-a986-e84d96666c0c>

— — — — —

Jannika Mansikkaviita: Exploring a novel EPHA1 variant as a potential cause for neuroaxonal dystrophy in Rottweilers. University of Helsinki. Supervisors: Tiina Harmas, Hannes Lohi.

<https://helda.helsinki.fi/items/8d8a4df1-4256-43f7-95d6-fd5ec905f6ef>

— — — — —

lisa Pekkinen: Kuulo- ja muut korvaongelmat akondroplasiassa: yleisyys, kliiniset piirteet ja hoitomuodot. University of Turku. Supervisor: Riikka Mäkitie.

<https://www.utupub.fi/handle/10024/182644>

— — — — —

Niina Piironen: Kronotyypin yhteys fyysiseen aktiivisuuteen, paikallaanoloon ja nukkumiseen 3–4-vuotiailla lapsilla. University of Eastern Finland.

Supervisors: Elina Engberg, Niina Lintu.

<https://erepo.uef.fi/items/2f7a81ed-4a39-4193-997f-d11dd3decf42>

Maryam Rastegar: Health behavior patterns and their association with central obesity: a cluster analytical approach among Finnish children aged 9–12 years. University of Helsinki.

Supervisors: Sohvi Lommi, Henna Vepsäläinen.

<https://helda.helsinki.fi/items/2e01383b-9d46-4329-beed-5912a7032b9f>

— — — — —

Oliver Ros: Blunting MYC function in mitochondrial complex III deficient mice with a hypomorphic Myc allele. Åbo Akademi University. Supervisors: Cecilia Sahlgren, Jukka Kallijärvi.

<https://doria.fi/handle/10024/192716>

— — — — —

Sannakaisa Suortamo: Sosiodemografisten tekijöiden yhteydet 3- ja 4-vuotiaiden lasten painoindeksiin ja vyötäröpituussuhteeseen. University of Jyväskylä. Supervisors: Elina Engberg, Karoliina Kaasalainen.

https://jyx.jyu.fi/jyx/Record/jyx_123456789_103282

— — — — —

Machiko Takanashi: Associations of sociocultural and physical food environment at Finnish primary schools with 3-6 grade pupils' vegetable intake. University of Helsinki.

Supervisors: Reetta Lehto, Carola Ray, Sanna Talvia.

<https://helda.helsinki.fi/items/a3cd5bd3-05a8-4f8c-8ecd-7012aa2c6c8a>

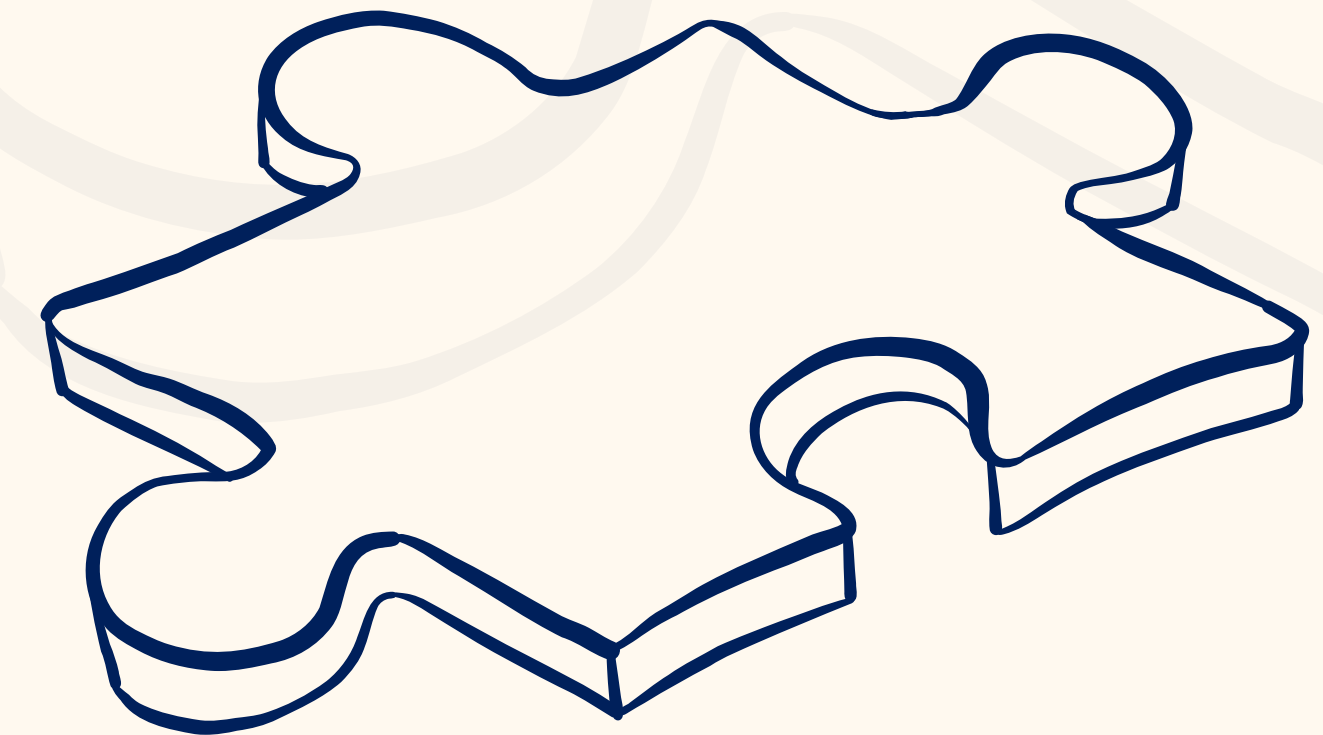
— — — — —

Anna Vainio: Protein interaction studies on the titin A150 domain using proximity-dependent biotinylation. University of Helsinki. Supervisors: Jaakko Sarparanta, Per-Harald Jonson.

<https://helda.helsinki.fi/items/0173672c-b04f-46b0-9f23-8816f913fda9>

Funders 2025

- Folkhälsan Research Foundation
- Samfundet Folkhälsan
- Avohoidon Tutkimussäätiö
- Cancer Foundation Finland
- Diabetes Research Foundation
- Einar and Karin Stroem Foundation
- Finnish Cultural Foundation
- Finnish Society of Sciences and Letters
- Foundation for Pediatric Research
- Glaukooma Tukisäätiö Lux
- Jalmari and Rauha Ahokas Foundation
- Jane and Aatos Erkko Foundation
- Juho Vainio Foundation
- Life and Health Medical Fund
- Magnus Ehrnrooth Foundation
- Medical Society of Finland
- Munuaissäätiö
- Research Council of Finland
- Signe and Ane Gyllenberg Foundation
- Sigrid Jusélius Foundation
- Silmäsäätiö
- Silmä- ja kudospankkisäätiö
- Stiftelsen Leo, Mary och Mary-Ann Hackman
- Tor, Joe ja Pentti Borgin Säätiö
- Viktor Ollqvists stiftelse
- Wellbeing Services County of Ostrobothnia
- Wilhelm and Else Stockmann Foundation
- European Commission
- Innovate UK
- National Institutes of Health
- Novo Nordisk Fonden
- Stiftung Muscle Matters



Read more about our research:
research.folkhalsan.fi